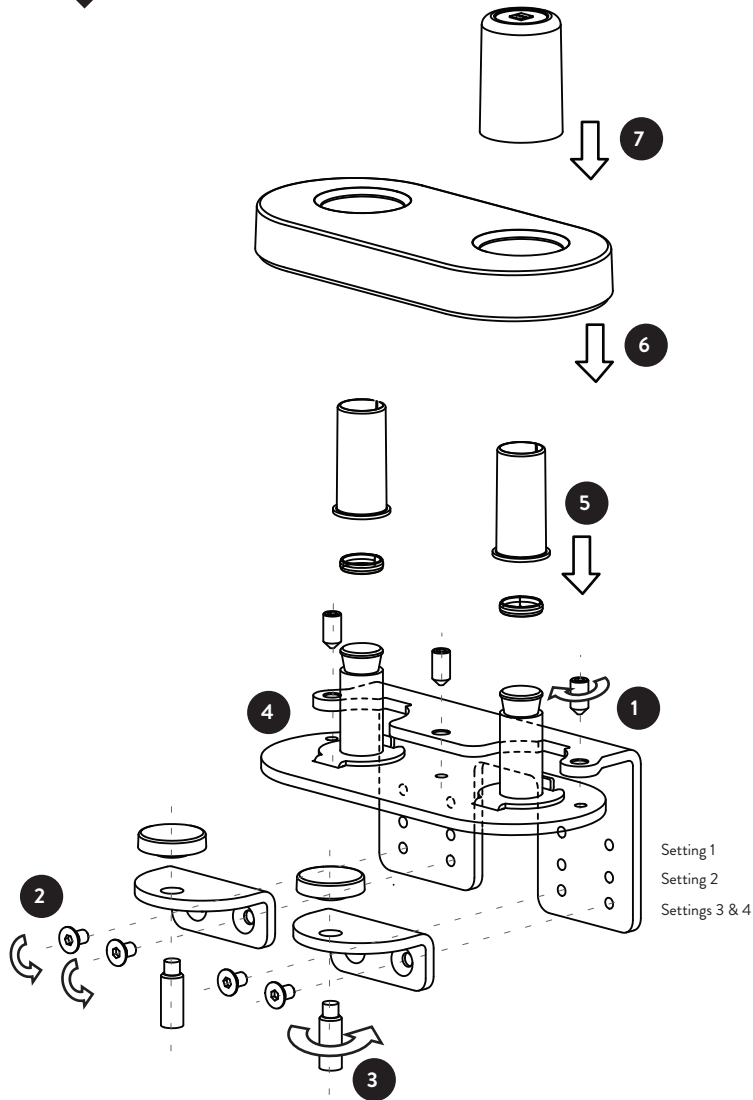
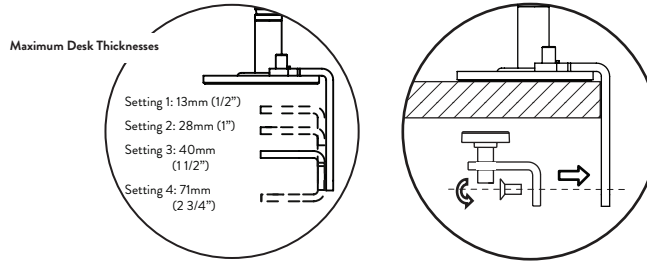


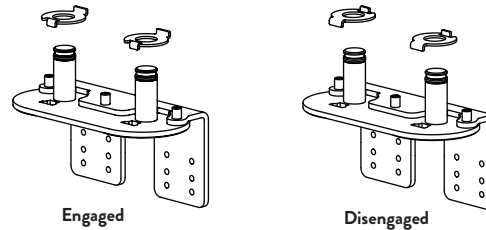
DYN/013/C38 Dual Split Desk Clamp



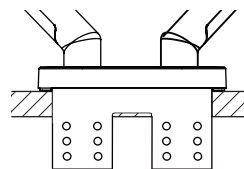
- 1 Attach clamp and clamp base together using screws provided, then fix to desk surface
- 2 Install bottom jaws in correct location using screws provided (for non-screened desks this can be pre-installed)



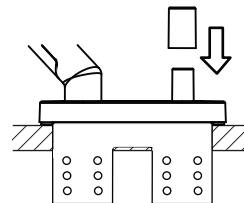
- 3 Insert screws, place pads on top and tighten screws under work surface
- 4 Engage or disengage 180° stop as required (default is engaged)



- 5 Push O-ring and bush onto clamp spigot
- 6 Install cover onto clamp
- 7 Mount arms onto clamp (if only one arm is required, place spigot cover over spare spigot for protection)



Two arms



One arm & cap

WARNING

- Do not use this product for any purpose other than that for which it was designed
- Ensure desk/work surface is suitable to take the weight of the arm/s and monitors
- Supported weight must not exceed the maximum load per arm
- Take care when installing the clamp as fingers could become trapped

MAINTENANCE and INSPECTION

- Ensure all screws are tightened and occasionally adjust if needed
- Ensure post is pushed fully down onto clamp before installing the arm(s) and monitor(s)
- Clean with a damp cloth, NO solvents

DISCLAIMERS

- The use of power tools, lever bars or excessive force during the installation, or re-configuration of the product will invalidate your guarantee
- Failure to observe the recommendations in the use, and configuration of these products may affect your guarantee

DYN-013-C38-INST-A MAY2012